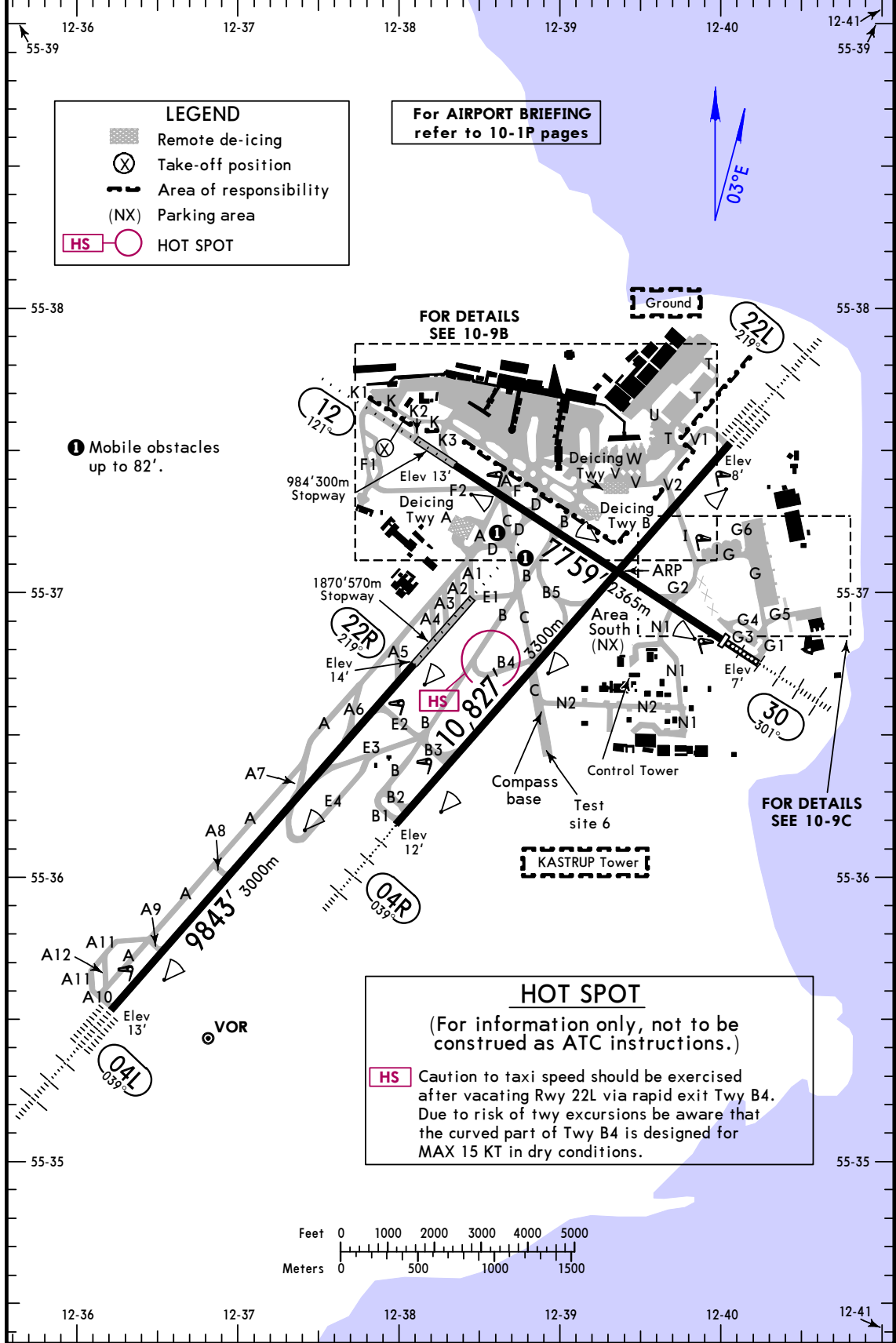




D-ATIS Departure	KASTRUP Tower (C)	*Apron	Apron
122.850	119.9	121.725	Arrival 121.625
Departure except Area South, Apron West & Apron East			121.9

Arrival 118.1	Departure Area South & Apron East 121.825	KASTRUP Tower (Acft on maneuvering area, departure Apron West) 118.575	Departing acft 119.350	KASTRUP Departure (R) 120.250 124.975
---------------	---	--	------------------------	---------------------------------------



LEGEND

- Remote de-icing
- Take-off position
- Area of responsibility
- (NX) Parking area
- HS** HOT SPOT

For AIRPORT BRIEFING refer to 10-1P pages

Mobile obstacles up to 82'.

FOR DETAILS SEE 10-9B

FOR DETAILS SEE 10-9C

HOT SPOT
 (For information only, not to be construed as ATC instructions.)

HS Caution to taxi speed should be exercised after vacating Rwy 22L via rapid exit Twy B4. Due to risk of twy excursions be aware that the curved part of Twy B4 is designed for MAX 15 KT in dry conditions.

